

Setting up the Ricoh-PC Connection for GPS-Photo Link

October 31, 2013

1) Set the Ricoh USB Connection to Mass Storage.

By setting the USB CONNECTION to MASS STR on the SETUP menu, you can view files in the camera and transfer files from the camera to your computer using the USB cable without installing the supplied software or USB driver.

To set the USB Connection to Mass Storage, push the MENU/OK button on the camera. Push the right arrow button to get to the SETUP menu. Use the down arrow button to scroll down to USB CONNECTION. Push the right arrow button to select MASS STR or ORIGINAL. Select MASS STR, and push the MENU/OK button to accept.

Note-When USB CONNECTION is set to MASS STR, files can only be read from the camera and cannot be written to or deleted from the camera. Therefore, if you intend to use the List Editor, you will need to change it back to ORIGINAL to transfer your list to the camera.

2) Connect the camera to the PC.

Make sure the camera power is off. Connect the accessory USB cable to the USB port on your computer. Connect the USB cable to the USB terminal on the camera. The camera will turn on, and the computer automatically reads a file necessary for the recognizing the camera as a drive.

Note-You must use the gray USB cable included with the camera. Do not attempt to use a different cable. The supplied gray USB cable is narrow enough to fit the USB slot on the camera without damaging or dislodging the GPS module.

Now the camera is displayed as an additional drive called RICOHDCI, and your pictures will be found in RICOHDCI\DCIM\100RICOH.

3) Install the GPS-Photo Link Software.

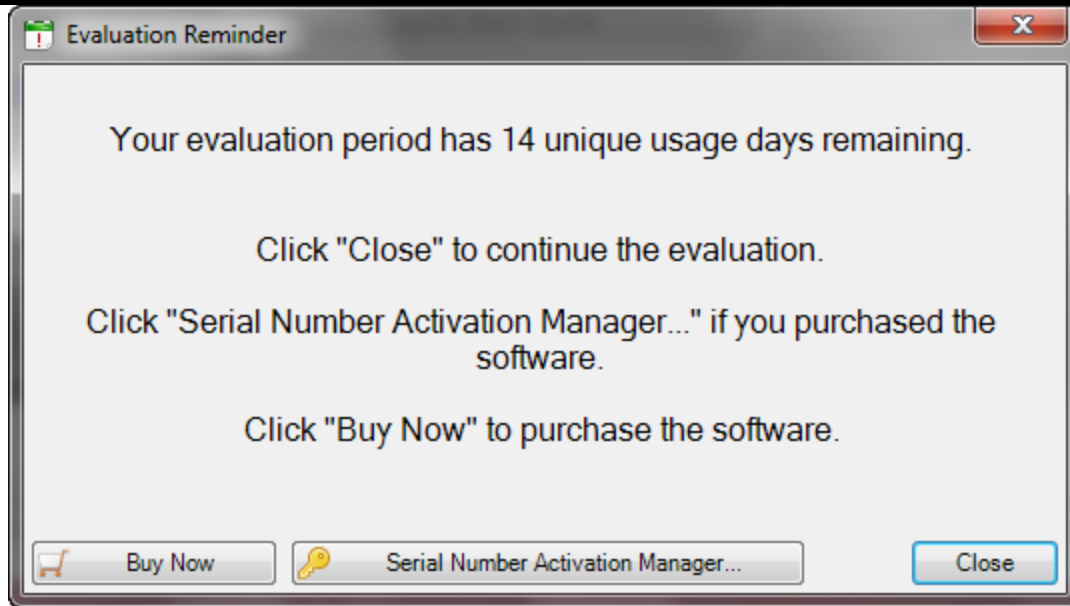
GPS Photo Link is designed with a "Wizard Style" format, so insert the disc into the CD-ROM drive, and installation will begin automatically.

Once installed, the program can be run by clicking the GPS-Photo Link icon on your desktop or by clicking on Start>Programs>GPS-Photo Link. When you open it for the first time, the registration screen will appear. Make sure to select the option to Run Evaluation as: Ricoh Camera Edition rather than Standard.



P. O. Box 31, Jerome, ID 83338

Ph: (208) 324-8006 Fax: (208) 324-8015 www.elecdata.com support@elecdata.com



The software is now in trial mode with a fourteen day usage limit. While in trial mode, the software is fully functional. To unlock the software and get it out of trial mode, you must enter the serial number that was given to you upon purchase.

Enter the unlock code obtained from GeoSpatial Experts, Inc.®, and click Register. This will start the software and bring you to the Select Photos dialog. Since your camera is now listed as a drive on your computer, you can now browse to the folder where the pictures are stored on the camera for transfer and processing.

Note-Do not turn off the camera or disconnect the USB cable during image transfer.

Congratulations: your camera and software are now set up!