

Setting NMEA Output on Trimble®

GPS Pathfinder® XB Receiver

November 7, 2014

Summary

Trimble XB cards are capable of standard NMEA output. However, the XB receiver may have the SiRF protocol enabled by default. Mapping programs such as ESRI® ArcPad® will not be able to communicate with the XB until NMEA output is configured.

Installing GPS Controller

All options are enabled using the GPS Controller program, available for download from Trimble's Support Website. To install this program on your mobile device, follow these steps:

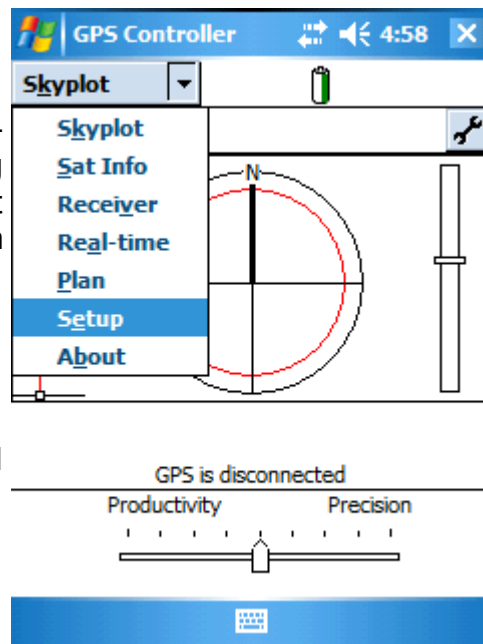
1. Download the program from the [Trimble website](#).
2. Connect your mobile device using Microsoft® ActiveSync® technology or Windows® Mobile Device Center.
3. Run the program downloaded in Step 1. Install to non-volatile storage, such as DISK or Built-in Storage, if given a choice regarding install directory.

Note: Windows Mobile 5.0 will not present you with a choice, as programs are always installed to non-volatile memory.

Set Configuration Options

All configuration options are set by first connecting to the receiver in GPS Controller, setting options, then disconnecting from the receiver in GPS Controller. Connecting for the first time will require setting up a BLUETOOTH® COM port on your mobile device.

1. Start GPS Controller by going to Start > Programs. The program will attempt to connect to a GPS receiver on the first available COM port.
2. Tap the drop-down arrow in the upper left-hand corner and select Setup.
3. Tap GPS Settings.



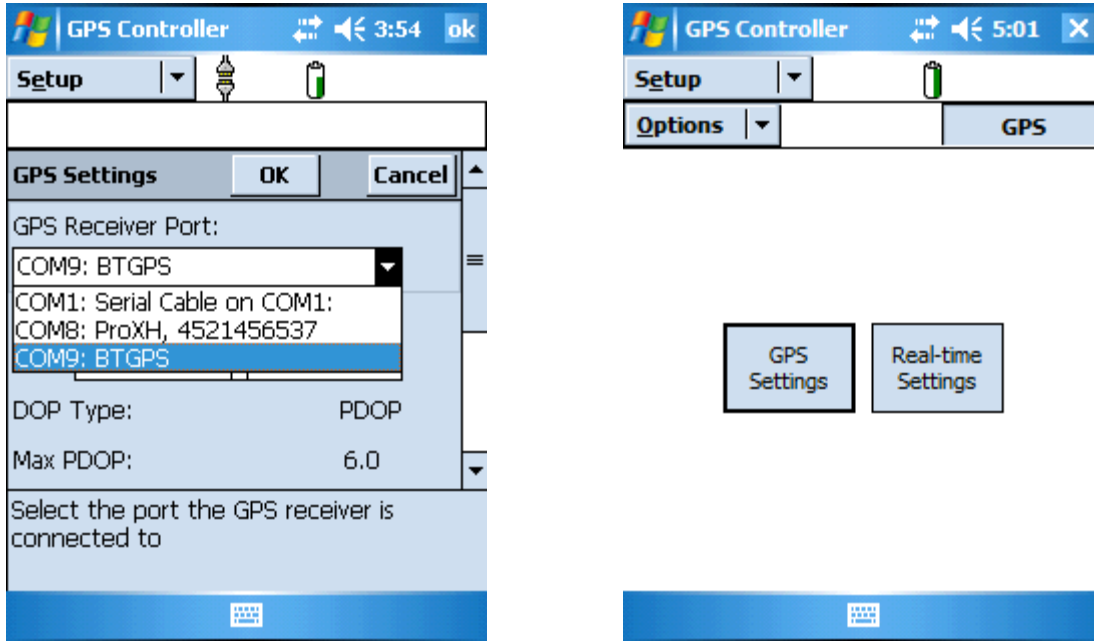
P. O. Box 31, Jerome, ID 83338

Ph: (208) 324-8006 Fax: (208) 324-8015 www.elecdata.com support@elecdata.com

Copyright 2013 © by Field Data Solutions, Inc. All rights reserved worldwide. DataPlus, HydroPlus, Sentinel, VCMS, Vector Control Management System, DataMaster, FIELDBRIDGE and Electronic Data Solutions are registered trademarks of Field Data Solutions, Inc. FieldSeeker, Everglade, DataLink and Quicklog are recognized trademarks for Field Data Solutions, Inc.

All other trademarks are registered or recognized trademarks of their respective owners. Trademarks provided under license from Esri.

- Set GPS Receiver Port to the appropriate Bluetooth COM port. Tap OK to save this change.
- Tap the **GPS** button in the upper right-hand corner to connect to the XB card.



- Once connection is made, tap GPS Settings.
- Scroll down and change NMEA Output to **On**. Tap the wrench that appears next to NMEA Output to configure which NMEA sentences to have the XB output. Tap OK to save this change. A message appears stating that 'The NMEA output settings will be applied on disconnect.' *Please note that this does NOT occur if you simply exit GPS Controller.*
- Tap Options > Disconnect from GPS to apply the settings changes.
- When prompted, tap Yes to disconnect. NMEA output is now set.

