

# Installing Trimble® GPS Pathfinder® Office

October 10, 2014

You will want to find the latest version of Pathfinder Office that is compatible with your computer and version of TerraSync™ or GPSCorrect™ installed to your GPS device. You can check the [compatibility chart](#) for assistance.

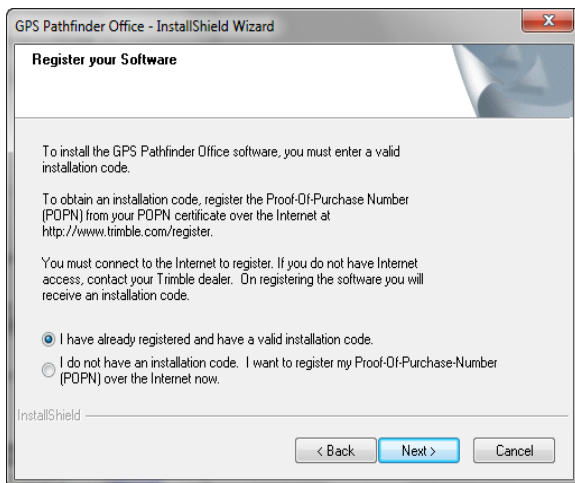
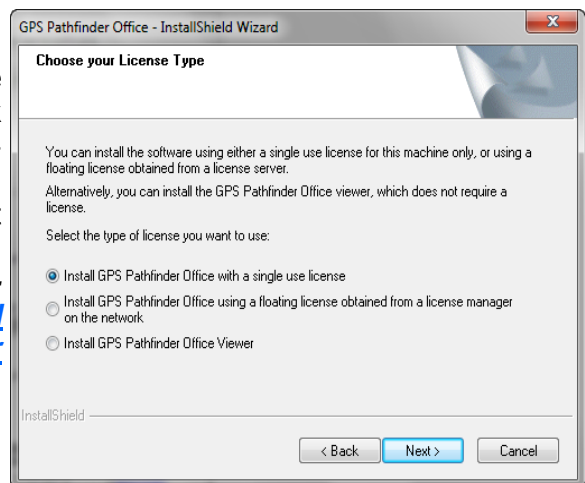
## To install the Trimble GPS Pathfinder Office

1. Download a compatible version of Pathfinder Office from the [Trimble website](#). You will need full administrative rights to your computer while installing this software.
2. Before you install a new version of the software, you will need to remove the old version. You will need to do that by going to *Start> Control Panel> Programs and Features* for Windows® 7 and Vista or *Start> Control Panel> Add or Remove Programs* for Windows XP.

**Note: Having two version of Pathfinder Office installed to a computer can cause some functionality and operating issues.**

3. If the installer downloads in a zipped format, make sure to extract the files before launching the installer. Double click on the executable file (.exe) that you downloaded in previous steps to launch the installer. During the installation you will have to accept the terms and condition and you will want to install as a single use license.

**Note: If you want to install and activate as a floating license, please see our support Note on [Installing and Setting Up the License Manager for Use with Pathfinder Office, GPS Analyst, or Positions](#)**



4. You will be asked for a valid installation code or Proof-Of-Purchase-Number (POPEN). You will want to select the option ‘*I have already registered and have a valid Installation Code*’ and enter your installation code and the next page.

**Note: You can find your installation codes registered to your [Trimble account](#). You will only have a POPEN from the initial software purchase. Once you have registered your POPEN, it is voided and you are given the installation code for future installation.**

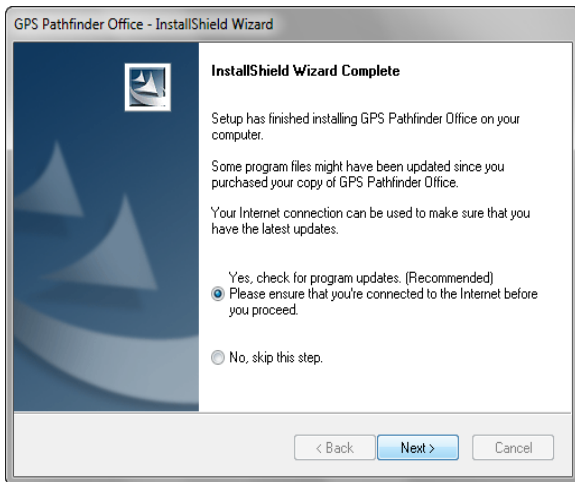


P. O. Box 31, Jerome, ID 83338

Ph: (208) 324-8006 Fax: (208) 324-8015 [www.elecdata.com](http://www.elecdata.com) [support@elecdata.com](mailto:support@elecdata.com)

Copyright 2013 © by Field Data Solutions, Inc. All rights reserved worldwide. DataPlus, HydroPlus, Sentinel, VCMS, Vector Control Management System, DataMaster, FIELDBRIDGE and Electronic Data Solutions are registered trademarks of Field Data Solutions, Inc. FieldSeeker, Everglade, DataLink and Quicklog are recognized trademarks for Field Data Solutions, Inc.

All other trademarks are registered or recognized trademarks of their respective owners. Trademarks provided under license from Esri.



5 After the installation has complete, you will have the option to install any updates to the software. We recommend installing these updates.

6 The easiest way to install the updates is just to download them from the Trimble web site over the Internet.

## To activate Trimble GPS Pathfinder Office

After you click finish on the update installer, the activation wizard should start. If the activation wizard doesn't automatically open, you can open it under *Start/ All Programs> Trimble> GPS Pathfinder Office> GPS Pathfinder Office License Administrator*.

- Select *Single Use* and click *Activate*.
- Insert your Pathfinder Office installation code and select *Next*.
- Choose the option *I wish to activate GPS Pathfinder Office over the Internet* and select *Next*.
- The license will then be activated and you are ready to use the software. If you have any issues getting the license to activate, please contact your Electronic Data Solutions sales rep for support.

