

Best Practices For Operating Archer™ 2

October 9, 2014

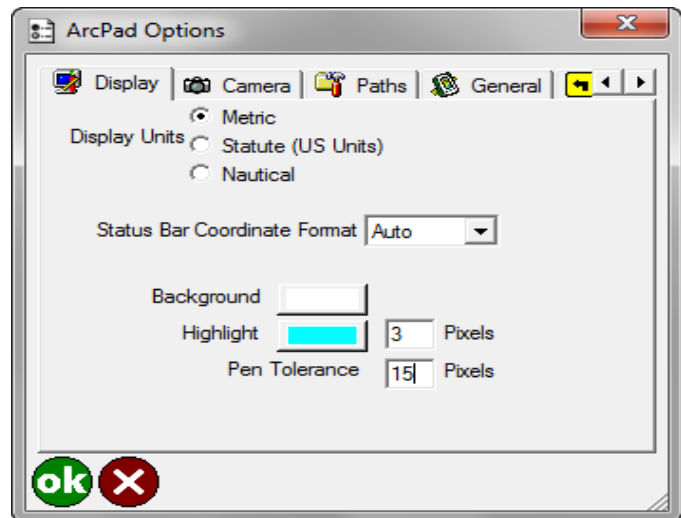
This support note provides some settings that can make data collection on Juniper® System's Archer™ 2 more productive.

Touch screen

The Archer 2 comes with a capacitive touch screen which is much different than the resistive touch screen previous models. Many user have reported difficulty selecting on-screen controls that are small or near the edge of the screen. Juniper Systems has released a touchscreen firmware upgrade that has helped significantly. You can get the download and information about that release [here](#). There is also a [blog post](#) that goes over the different types of touch screen profile settings and recommended use.

If you are using ESRI® ArcPad® on the Archer 2, then you know that the ArcPad interface has many small buttons that aren't easily selected when using a capacitive stylus.

One recommendation that we can make is changing the pen tolerance from 5 pixels to 15 pixels. This can be changed in the ArcPad options on the Display tab. Changing the pixel size causes ArcPad to recognize a larger surface area when the screen is tapped, thus making it easier to select small buttons. If you will be deploying ArcPad to a large fleet of Archer 2, it will be best to configure the pixel size in the settings before installing it to the Archers.



For more information on capacitive vs. resistive touch screens, check out this [blog post](#).

ArcPad Freezing or Slow to Respond

Even with the larger internal memory size of the Archer 2, the operating system has a 32 MB limit on RAM memory used per application. This limit can cause a low memory error in ArcPad or cause ArcPad to become unresponsive when drawing large maps with lots of layers. You can check out our support note, [Recommended Techniques to Prevent ArcPad from Freezing on a GPS Handheld](#), to help resolve this issue. If you would like to see how different sizes of maps affect the unit, watch the [video](#) that shows how you can view the memory being used.



P. O. Box 31, Jerome, ID 83338

Ph: (208) 324-8006 Fax: (208) 324-8015 www.elecdata.com support@elecdata.com

Collecting Data with GLONASS Satellites

If you experience trouble connecting to GLONASS satellites in ArcPad 10.2, make the below changes to your GNSS settings under Start> Setting> GNSS. Check on all the NMEA Sentence, check on the GLONASS options, and change the Update Rate to 1 HZ.

