

Understanding the ArcPad®/Pathfinder® Office Workflow Using the ShapeCorrect Utility

August 22, 2013

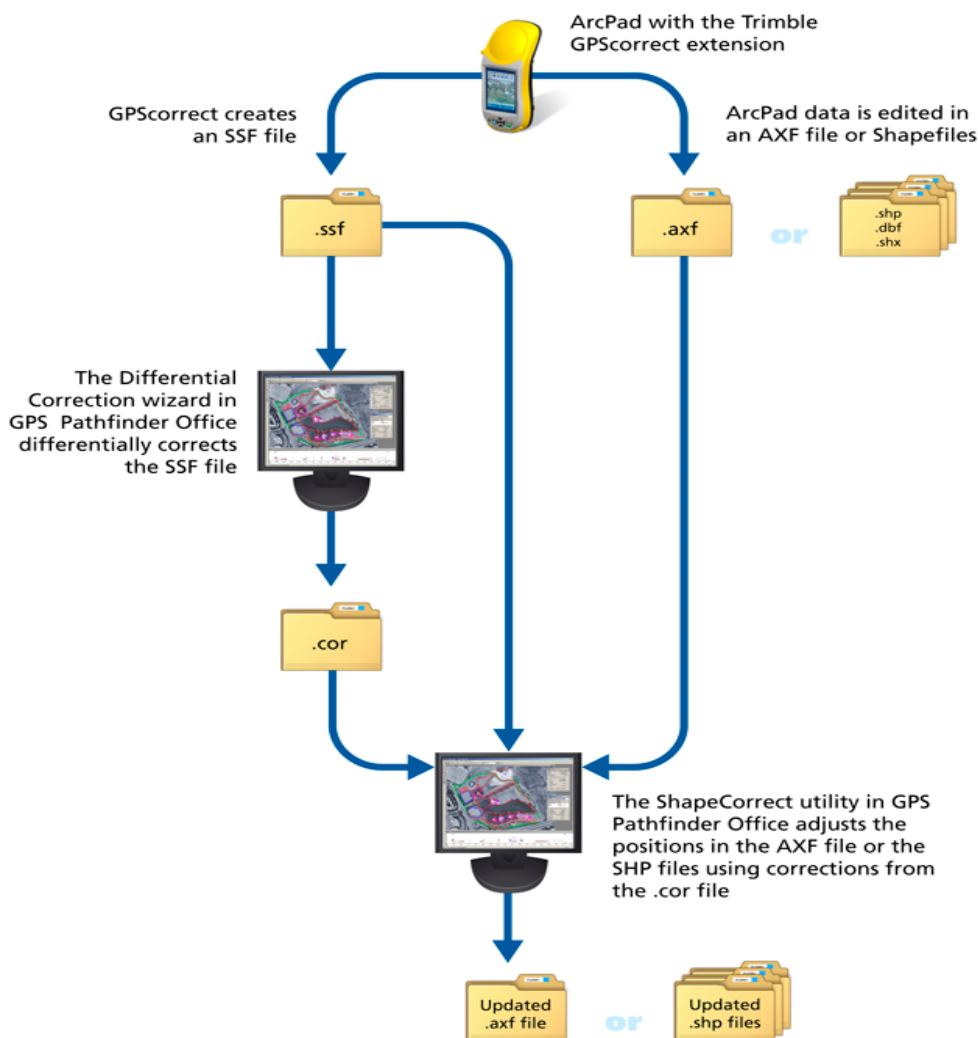
Overview

When you collect or edit features using a field computer and the Esri® ArcPad software, ArcPad logs the feature information in ArcPad data files (either an AXF file or Shapefiles). The Trimble GPScorrect™ or Trimble Positions extension for Esri ArcPad software simultaneously logs extra GNSS position and measurement information for the features in an SSF file. You must differentially correct the SSF files and then merge the corrected GNSS information into the original ArcPad data files to improve the accuracy of the positions in the ArcPad data files. You can do this using the Differential Correction wizard and the ShapeCorrect utility provided in the GPS Pathfinder Office software.

How ShapeCorrect works

The ShapeCorrect utility adjusts the positions in the ArcPad data files with the corrected GNSS positions from the corrected SSF (.cor) file. The ShapeCorrect utility matches the positions from the SSF file with their corresponding positions in the ArcPad data file, and then adjusts the location of the positions in the ArcPad data file using the corrections from the .cor file.

Note- ShapeCorrect does not recalculate positions and then transform to the .axf or shapefile coordinate system. It ignores the coordinate system and only “adjusts” the features based on how far and what direction the corrected positions were adjusted from the uncorrected positions.



P. O. Box 31, Jerome, ID 83338

Ph: (208) 324-8006 Fax: (208) 324-8015 www.elecdata.com support@elecdata.com

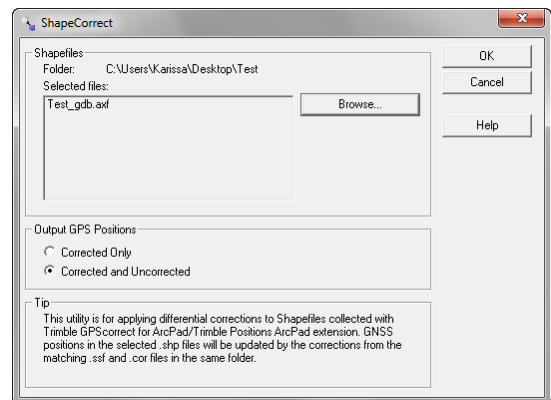
Workflow

- Open ArcMap and add applicable layers into your map document. Make sure to save the mxd.
- Check out your ArcMap data using the ArcPad Data Manager.



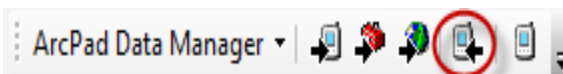
- Copy the check out file over to the field device and collect your data.
- After you have successfully collected your data, disconnect from the satellites and close ArcPad. You will need to copy the file back to the desktop computer.
- Using GPS Pathfinder Office, open the Differential Correction Wizard under *Utilities> Differential Correction*. Select the file that you just copied to your computer by selecting the plus button and browsing to the file. Proceed to run the Differential Corrections on the file.

- To get your data ready for the Shapecorrect utility, you will need to make sure that the .SSF and .COR files are located in the same folder as the .axf file. **Note– If these files are not in the same folder the ShapeCorrect Utility will not work.**



- Open the ShapeCorrect utility under *Utilities> Other> ShapeCorrect*. In the ShapeCorrect utility, browse to the axf file that you want to apply the corrections to and select it. Select OK and the ShapeCorrect will run and tell you that it was successful.

- Now you will go back to ArcMap and open your map document. Check the data back in using the ArcPad Data Manager.



- The map will now show your collected data with the applied corrections.