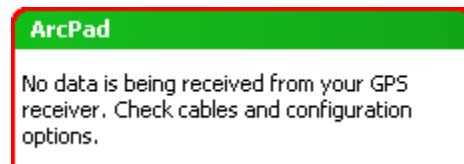


## Reason

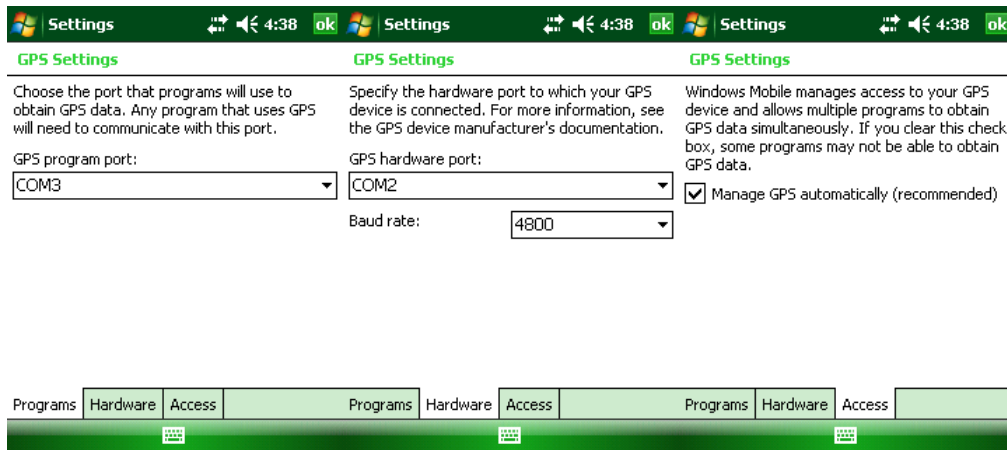
The Juniper Archer uses Compact Flash GPS devices. If the screen is turned off (the device is suspended), ArcPad cannot re-start the GPS connection to the Compact Flash GPS device. In some versions of ArcPad, this resulted in ArcPad crashing. In newer versions, it may result in a GPS warning message.



## Solution

Configure Windows Mobile to handle GPS connection settings.

1. On the mobile, go to Start > Settings > System. Click on the **External GPS** applet.
2. Set the GPS program port to COM3. Any program that uses GPS (including Sentinel GIS) will need to connect to GPS using this port. On the Hardware tab, specify COM2, 4800 baud. On the Access tab, allow Windows Mobile to automatically manage the GPS connection.



3. Verify the device description is **Archer**. Go to Start > Settings > System > About > Device ID > Description. This will ensure that the Sentinel GIS Application Manager start ArcPad with GPS set to COM3.



About

Your device uses this information to identify itself to other computers. Enter a name that starts with a letter and contains the characters \_ , A-Z, or 0-9.

Device name:

Description:

