

# Data Collection with DataPlus Mobile

April 21, 2016

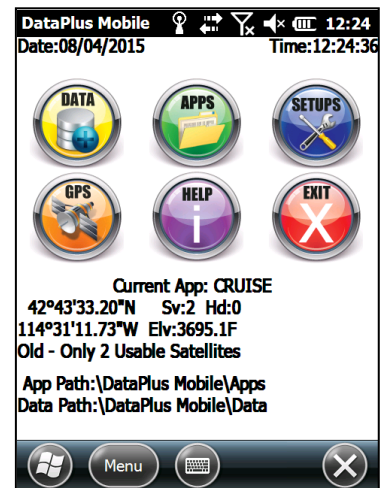
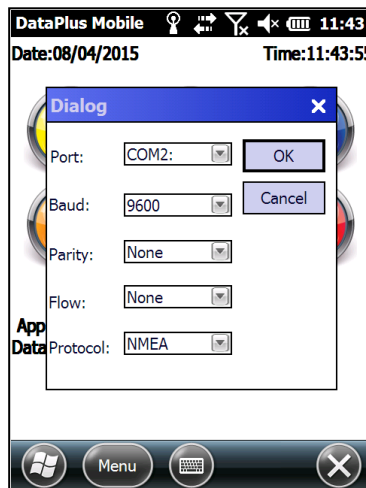
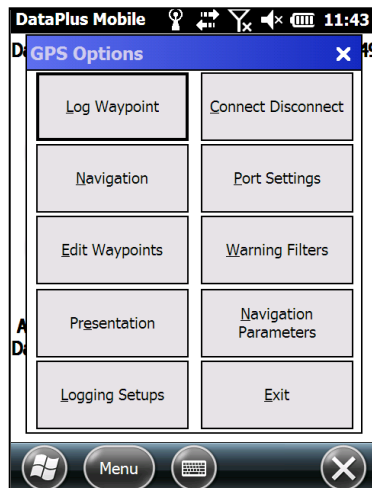
This support note will walk through the steps of selecting an app and collecting data using an internal GPS receiver. To connect to the software, you will need to have the NMEA option turned on and select the GGA sentence as a minimum requirement. You should turn off any sentences that provide quality or status information.

## Configuring Screen Preferences

1. Select the Setups Icon and choose Preferences.
2. Choose the appropriate Touch Screen Usage Requirement. None, Low, and Medium are meant for devices with full keyboards and no or minimal touchscreen input. The function keys will not display on the screen. High is meant for touch screen devices that have a limited or no keyboard. This will have the function keys on the screen.
3. The Font Size will default to 9. If you have large data entry columns or get an error that the column can't be displayed, you will want to reduce the font size.

## Configuring the GPS

1. From the main screen of DataPlus Mobile on the mobile device, select the GPS icon and choose Port Settings.
2. Set the appropriate port settings for your specific GPS receiver.
3. After clicking OK, you will be asked if you want to open the GPS Port with new settings. Click Yes.
4. Alternatively, on main DataPlus Mobile screen, select the GPS icon and click Connect.
5. You will be able to see current GPS status information on the screen.

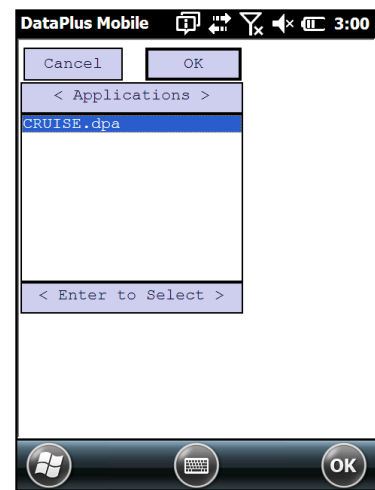
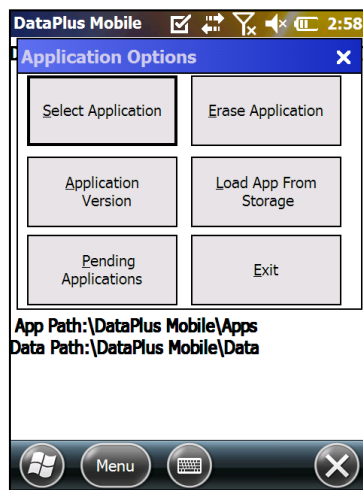
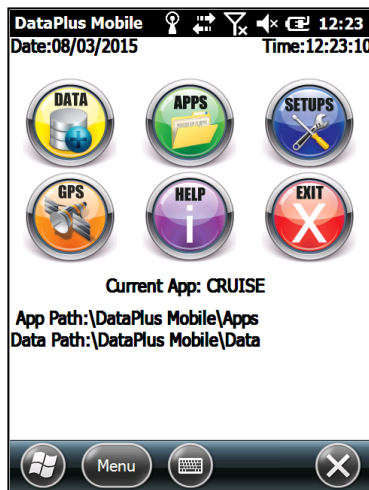


P. O. Box 31, Jerome, ID 83338

Ph: (208) 324-8006 Fax: (208) 324-8015 www.elecdata.com support@elecdata.com

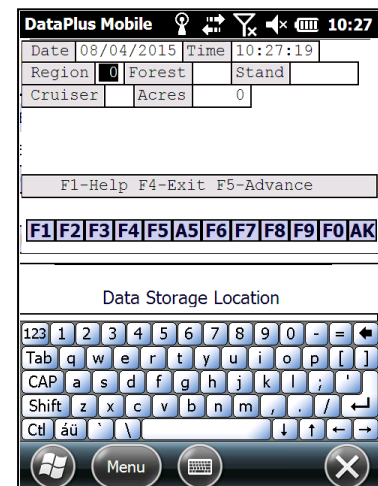
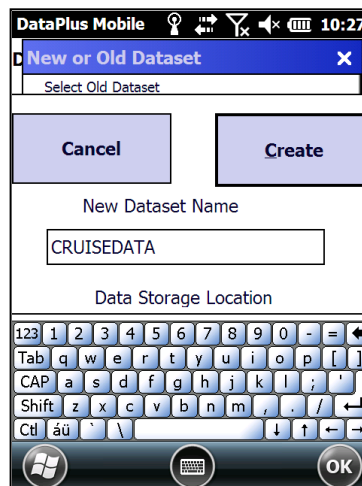
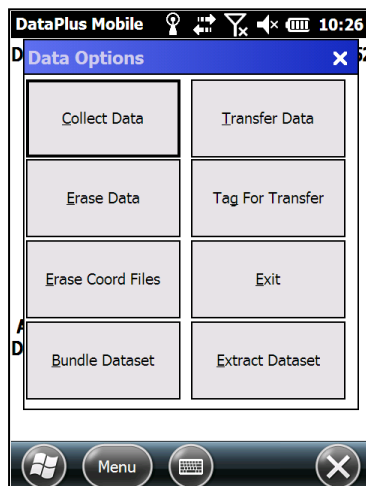
## Extracting and Using an Application for Data Collection

1. Open DataPlus Mobile on the mobile device.
2. Select the Apps Icon and choose Select Application in the Applications Options.
3. Select your application and click OK. The extraction will automatically run.

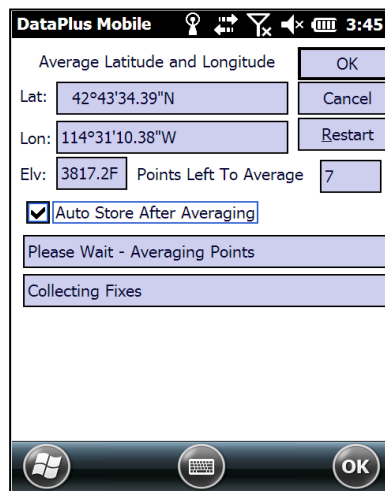
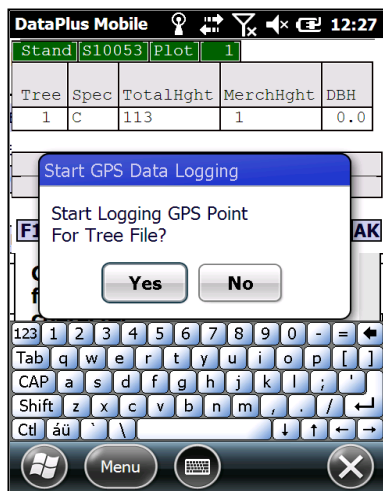


## Creating a Data File for Data Collection

1. Select the Data Icon and choose Collect Data in the Data Options.
2. Enter a name for your dataset. The storage location will be preset.
3. You can now start collecting data.
4. You can use the arrow keys to move to different columns.
5. You can use the F5 button to move to the next level. If you have data entry requirements, you will have to complete those columns before you are allowed to proceed to the next level. If more than one child level is available, you will get a menu to pick the level to move to. The F4 button will take you back to the parent level.



6. Within your application, when you are at the line and/or the field where latitude, longitude and elevation are required, press Ctrl G and you will be asked to start logging GPS points.
7. Select Yes and DataPlus Mobile will automatically advance to the position averaging screen.
8. If the box Auto Store after Averaging is checked DataPlus Mobile will automatically proceed back to the feature collection screen after the pre-determined number of points have been averaged. If this box is not checked the user must tap OK to proceed.
9. The fields: latitude, longitude and elevation are populated and will be included in the data download.



## Bundle DataSets

Datafiles will need to be bundled before the DataPlus Mobile Host is able to transfer the from the handheld device to your computer.

1. When data collection is complete, go to the main screen of DataPlus Mobile on the mobile device.
2. Select the Data icon and choose Bundle Dataset.
3. Select the file you wish to bundle and select OK.

