

DATAPLUS® PROFESSIONAL

Applications Generator & Program Editor

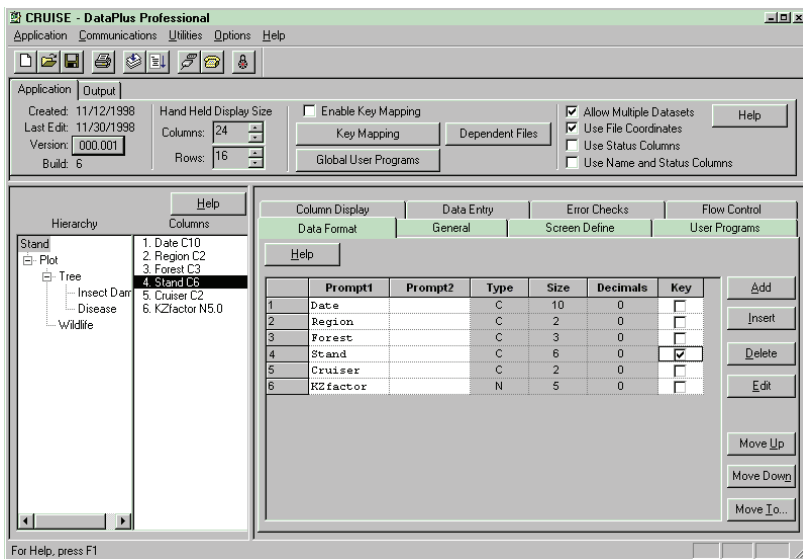
Compatible with DOS,
Windows® CE.net
& Mobile

**Fast, Customized Data Collection for DOS and
Windows® Mobile Hand Held Computers**

DataPlus is a Windows-based application generator for both DOS and Windows Mobile hand held field computers that will quickly create flexible data collection applications. DataPlus lets you build applications that mimic clipboard data sheets. You design and test the application on your desktop PC then transfer it to your hand held. For advanced features DataPlus Professional allows you the power to write custom user programs.

DataPlus Professional Features

- Supports both DOS and Windows Mobile portable computers. Upgrade to the latest Windows Mobile hardware without having to redesign your software.
- Multiple data levels—up to four data levels with up to nine branches for each level, 250 columns each.
- Functions to customize automated data entry types, error checking, and screen displays.
- Accommodates input from external serial devices.
- Windows Mobile functions that include four different levels of touch screen support.
- Write “C” like user programs for calculations, reports, data manipulation, etc.
- Includes integrated communications package for DOS or CE file transfer. Includes data conversion features for easier data management with build in data editor.
- Stores data in XBASE style DBF formats with ASCII converter function. Optional MBD Converter extension for exporting data collected by DataPlus to Microsoft Access (MDB) databases.
- Allows for Com6 on Windows Mobile devices so Bluetooth® com ports can be used.



Sensor Input

A combination of keyboard and sensor input can be accommodated for any RS232C device.

For example:

- Smart Bar Code Wands & Scanners
- Digital Calipers
- Electronic Balances & Scales
- GPS Receivers
- Laser Rangefinders
- Water Quality Multiprobes

Tested Compatibility

DataPlus has been tested to run on these hand held computers:

- Windows Mobile/CE: Juniper Systems® Mesa (Pending), TK6000, Archer, Allegro MX™, CX™, CE™ and DOS/CE™, DAP CE8640, CE5240/CE5320, Trimble® GeoExplorer®, Nomad®, Juno™, Ranger™, and Recon®.
- DOS Computers: Juniper Systems Allegro DOS™, CE/DOS™, Pro4000, Pro2000; DAP PC9000, PC9500, PC9800; Husky FS/2, FS/3, FS/GS and CMT PC-5L.

If your hand held isn't listed, we will insure its compatibility before you purchase.

DataPlus Professional Applications Generator allows you to design and test your Mobile Application on the desktop.

**DOWNLOAD FREE DEMONSTRATION
SOFTWARE FROM OUR WEBSITE**



P. O. Box 31 Jerome, ID 83338 Ph: 208-324-8006 Fax: 208-324-8015

www.elecdata.com

DataPlus® Software features:

Error Check Types

- Minimum/Maximum range checks
- Min/Max values with Min/Max values based on other columns
- Min/Max values defined in a DBF file set to ranges based on other columns with specific ranges
- Min/Max values defined in a DBF file set to ranges based on other columns being on a list
- List checks compared to a DBF file list
- Translated list check allowing numeric codes to be entered with alpha codes being stored
- Error checks related to data in other columns
- User error check programs allow for algorithms outside the scope of the above error check types
- Missing data check options with audible alarms

Screen Types

- Line display
- Virtual display
- Double lined prompts
- Show columns on subsequent screens
- Column data can be clipped to view a certain length with slider window for data input.
- Columns can also be set to view only, skip or be hidden to prevent user input
- Help messages can be defined for each column

Data Entry Types

- Copy data forward from the cell above
- Increment value from the cell above
- Read date and time from internal clock
- Generate random number with definable limit
- Preload constant data into the cell
- Store line number into the cell

- Increment values in a repeating pattern from the cell above
- Filter keyboard data requiring letters or digits to be in a specific location within input string
- Force user data to be unique for column
- Convert user data entry to upper case
- Formatted date and time entries
- View only to prevent the user from inputting data
- Skip to by-pass the column
- Elapsed time for time studies
- Serial input from RS232 devices
- Data entry user programs allow for algorithms outside the scope of the above data entry types
- Column searches for specific data

Flow Control

- Jump tables allowing movement to specific column based on data from other columns
- Find First Empty feature stops at the first empty column when moving up and down in the file

Custom User Programs

- Written in a "C" like programming language called DPC
- Code is compiled before loading into hand held to increase execution speed
- User Programs can include calculations, reporting, & flow control
- Global level user programs
- File level user programs
- Data level entry user programs
- Data level advance user programs
- Data level retreat user programs
- Sibling jump user programs
- Column change user programs
- Line change user programs
- Data entry user programs
- Error check user programs
- Serial port data entry user programs

Other Features

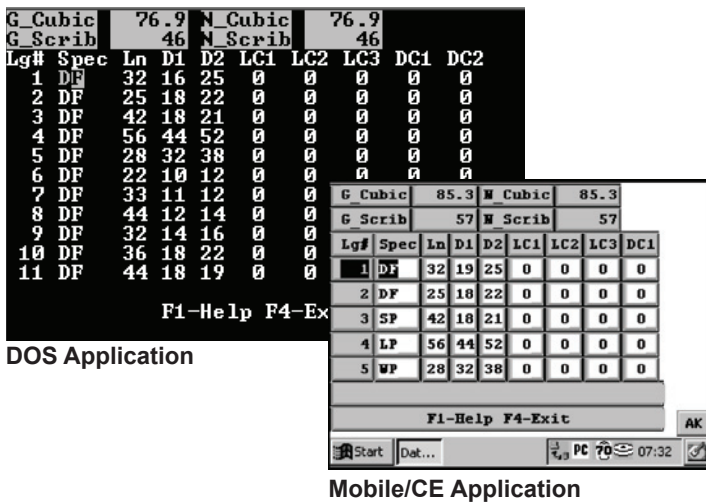
- Test feature allows testing of the application as it will appear on the portable computer. Also gives descriptive error messages for setup & program problems
- Integrated communications Host Mode on the PC for background or unattended data transfers by direct connection by phone line transfer or through a modem
- Four data levels with up to 9 branches for each
- Extended BIOS support for power management
- Reassign actions to new keys on the hand held
- Data stored in XBASE style DBF format with ASCII & DBF conversion utilities. Optional Microsoft Access (MDB) converter available.
- On-line helps
- Hand held display size 6 line x 20 char. to 25 x 80
- Depending upon memory, up to 255 applications may reside on portable computer at one time
- Each data level may have up to 250 columns, column size up to 15 digits or 30 characters
- Allows for Com6 on Windows Mobile devices so Bluetooth com ports can be used



Build One Application for Both Your DOS and Mobile Hand Helds

DataPlus CE Module

DataPlus Professional comes with features to support application development for Windows Mobile devices. DataPlus versions for generating DOS programs have been used successfully for many years. Current DataPlus users will be able to run existing DataPlus applications, without modification, on Windows Mobile devices. This will give you the ability to upgrade to the latest Windows Mobile hardware without having to redesign your software.



What's Different From the DOS Version?

- Four different levels of touch screen support are available depending on your production needs. High production data collection can be hindered if touch screen input is required. The first two of the following options yield the highest production. The other two accommodate pop-up keyboards.
 - Touch Screen Ignored. (For hand helds with a full keyboard available.)
 - Touch Screen used only for moving to other fields on screen or double tap a cell to bring up the data validation for the cell. (For hand helds with a full keyboard available.)
 - Touch Screen available for most DataPlus Edit Actions. Includes a button for DataPlus Action Keys. This option also includes touch screen "Cancel" options for most menu and dialogs. (For hand helds with pop-up keyboards.)
 - This option includes the same options as 2 and 3. plus touch screen buttons for all function keys. (For hand helds with pop-up keyboards.)
- Data and application storage locations can be changed on the hand held.
- New Host Communication software version for use with Windows Mobile. Host CE uses Microsoft ActiveSync for automated file transfers.

Components of DataPlus Professional

The DataPlus Professional package contains these elements:

- Application Generator program that runs on your Windows desktop PC to design and test your application before transferring to your portable computer.
- DPCedit program that runs on your Windows desktop PC to write "C" like user programs to customize advanced features of your application.
- Host Communication program that runs on your Windows desktop PC for file transfers. It also includes a Data Converter feature that will change the XBASE database file to an ASCII file. Includes two versions: one for DOS portable computers and one for Windows Mobile portable computers.
- DataPlus MDB Converter that is an optional extension the Data Converter feature included with DataPlus Host. It exports data collected with DataPlus to a Microsoft Access (MDB) database.
- Data File Editor program that runs on your Windows desktop PC for data file editing. Once the data has been transferred from the portable computer to the desktop, data can be edited if desired.
- One DOS portable computer license or one Windows Mobile portable computer license. This program is loaded onto your portable computer and will run the application transferred from your desktop PC.
- Detailed User Manual and Tech Notes are included on CD.

How Do I Upgrade to DataPlus CE?

If you are currently using DataPlus Professional and want to upgrade to using DataPlus CE, it is easy and economical:

- DataPlus CE Users with versions 2.0 or higher wanting Mobile 6 compatibility, download latest patch at no charge:
http://store.elecddata.com/downloads/download_patch_ce_dos.aspx.
- DataPlus Professional DOS Users wanting compatibility with all Windows CE and Mobile versions listed in addition to DOS, purchase DPUPG-PKG-CE and what additional Windows Mobile Portable Computer Licenses (DPPRO-CEL) you will need.
- If you are using DataPlus For DOS, you will need to purchase the DataPlus Professional Package (DPPRO-PKG-CE) and what additional Windows Mobile Portable Computer Licenses (DPPRO-CEL) you will need.

Note: The DataPlus MDB Data Converter is an optional extension of the standard DataPlus File Converter that allows data collected with DataPlus Professional to be exported directly to Microsoft Access (MDB) files. DataPlus Professional Applications Generator, DataPlus Host or DataPlus Field Kit, versions 1.8 or higher, must already be installed on your PC. This module can be purchased separately for any of the upgrade options.

Your satisfaction is guaranteed

There are many ways we will guarantee your satisfaction with the DataPlus product:

- Demonstration software is available:
 - Download a demo version from www.elecdata.com
 - Request a free demo copy on CD.
- Purchase the complete package with a 30-day, money back guarantee.
- Receive unlimited technical support by telephone/Email.

If your portable computer isn't on the tested compatibility list, we will insure its compatibility before you purchase.

System Requirements

PC Desktop Compatibility:

Windows® 2000, XP, Vista and Windows 7 32-bit & 64 bit*
8M RAM & 4M Hard drive space

Windows Mobile/CE Portable Computer:

HPC or Pocket PC Type with Windows CE 3.x, CE.net 4.x, Windows Mobile 2003, 2003 Second Edition, or Mobile 5, 6.X (6.5 pending)

DOS Portable Computer: DOS 3.1 or greater, 640K RAM

*For Vista and Windows 7, a DOS emulator and Winhelp32.exe is required.

Pricing

DPPRO-PKG-CE	DataPlus Professional Application Generator & Hand Held Computer License for Windows Mobile Includes one copy of Application Generator, DPCedit Program Editor, Host Communications & Data Converter For DOS and Windows CE, Data File Editor, one Windows Mobile Hand Held License & User Manual Set on CD.	\$595
DPPRO-PKG-DOS	DataPlus Professional Application Generator & Hand Held Computer License for DOS Includes one copy of Application Generator, DPCedit Program Editor, Host Communications & Data Converter for DOS and Windows Mobile, Data File Editor, one DOS Hand Held License & User Manual Set on CD.	\$595
DPPRO-DOS	Additional DOS Hand Held Computer License & User Manual on CD	\$250
DPPRO-CEL	Additional Windows Mobile Hand Held Computer License & User Manual on CD	\$250
DPPRO-FLD-CE	DataPlus Field Kit. Includes one copy of Windows Mobile Hand Held Computer License and one Copy of Host and Data File Editor for DOS and Windows Mobile with User Manual on CD	\$450
DPPRO-FLD-DOS	DataPlus Field Kit. Includes one copy of DOS Hand Held Computer License and one Copy of Host and Data File Editor for DOS and Windows Mobile with User Manual on CD	\$450
DPPRO-HST	Additional Host Mode License for DOS and Windows Mobile & User Manual on CD Includes the Data Converter	\$275
DPPRO-MDB	Optional DataPlus MDB Data Converter. Optional extension of the standard Data Converter included with DataPlus Host. User Manual on CD. NOTE: DataPlus Professional Applications Generator, DataPlus Host or DataPlus Field Kit, versions 1.8 or higher, must already be installed on your PC. This module is purchased separately.	\$395
DPPRO-DFE	Additional Data File Editor & User Manual on CD	\$100
DPUPG-PKG-CE	Upgrade DataPlus Professional Ver. 1.x to 3.x Package. Includes one copy of Application Generator, DPCedit Program Editor, Host Communications & Data Converter For DOS and Windows Mobile, Data File Editor, one Windows Mobile Hand Held License & 3.x User Manual Set on CD. (Serial No. from original DataPlus Professional required.)	\$395

Copyright 2012 © by Field Data Solutions, Inc. All rights reserved worldwide. DataPlus, FIELDBRIDGE, HydroPlus, VCMS, Vector Control Management System and Electronic Data Solutions are registered trademarks of Field Data Solutions, Inc. DataLink, Everglade and FieldSeeker are recognized trademarks for Field Data Solutions, Inc. Trademarks provided under license from Esri. All other trademarks are registered or recognized trademarks of their respective owners.

Your representative is:



P. O. Box 31 Jerome, ID 83338 Ph: 208-324-8006
www.elecdata.com

Fax: 208-324-8015